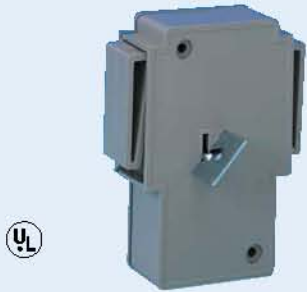


HOLD UP SWITCHES



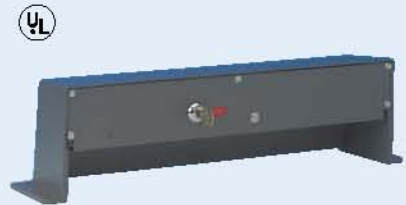
268
Hold-Up Switch

- No chance of accidental tripping
- Smooth operation without danger of being detected
- Supplied with SPDT contacts for open or closed circuit systems



264
Money Clip

- Designed for installation in cash registers, cash boxes and at tellers' windows
- When activated, sends an immediate signal to either the police or central office
- Single pole double-throw contacts
- Recessed screws provided for easy mounting



266
Foot Rail

- Reliable easy to operate foot activated hold-up device
- Housing made from rugged cast aluminum
- Designed to minimize the possibility of false alarms while permitting unobtrusive operation
- Indicator flag locks when alarm is tripped

DOOR CORDS



64
Retractable Slimline Stretch Door Cord

- Solves the problem of carrying protective circuits off double hung-windows, sliding doors and other movable fixtures

ALSO AVAILABLE:

- 64WH** – White
- 64BR** – Brown
- 64GY** – Grey



69
Disconnecting Door Cord

- Ideal for protecting areas such as overhead garage and roll up doors
- Can be used as a contact or as a combination contact and circuit take-off
- Contains polarized plug and special stress relief chains which protect door cord wires